

Emerald Hills Review

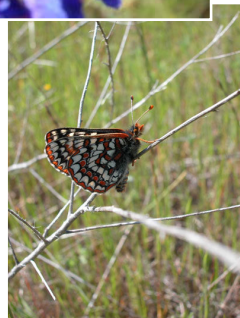
Emerald Hills Homeowners Association Newsletter

January 6, 2010



EMERALD HILLS A GREAT PLACE TO LIVE!

Welcome to the winter edition of the *Emerald Hills Review*. We hope you enjoy reading it as much as we enjoy bringing it to you.



The **2010 Annual Member Meeting** will be held on Tuesday, **March 23, 2010** at **7:30 pm** in the Fellowship Center at the Peninsula Covenant Community Center, 3560 Farm Hill Blvd., Redwood City. Parking is available in the PCC lots and on the street. Registration will begin at 7:00 pm. Please arrive early enough to allow ample time for parking and registration.

Winter Fire Safety

A Message from Selena Brown,
Public Education Officer,
Woodside Fire Protection District



Just as the summer months bring an increase for fire risk, so do the winter months.

Since the Bay Area has been experiencing a drop in temperature, we all have the tendency to turn up our furnaces, turn on our space heaters, and start an inviting fire (in the fireplace, of course!)

According to the U.S. Fire Administration (USFA), "an estimated 28,300 residential building electrical fires occur annually and cause 360 civilian deaths, 1,000 civilian injuries, and \$995 million in direct loss."

December and January are the months with the highest number of electrical fires. Most of these fires are caused by old wiring, or faulty electrical outlets. Ensure that your family and home are safe this year by following some simple steps.

- Maintain a 3-foot clearance from all heating appliances.
- Inspect your heating equipment and have it serviced regularly.
- Install a sturdy screen on your fireplace. Have the chimney inspected and cleaned when necessary. Ensure your chimney has a spark arrestor.
- Turn off portable heaters when leaving the room. Consider purchasing models that have a shut-off feature when tipped over (for fan-types). Ensure all heaters are Underwriters Laboratory (UL) listed.
- Do not use the oven to heat your home.
- Routinely check electrical appliances and wiring and replace and old, worn, or damaged cords.
- Check and test all your smoke alarms to ensure they are in working order. Make sure there is one in each bedroom and on every level of your home.

For more information visit Woodside Fire Protection District's website at www.woodsidefire.org.

It's Getting Better All the Time!

A Message from EHHA President, Michael Mangini



As the EHHA Board looks back at the year behind us and forward to the year to come, I'm reminded of a line from a song on the Beatle's Sgt. Pepper album "It's getting better all the time!"

Here's why:

Over the past year, the Board promised to do two things: (1) keep Emerald Hills residents informed about local issues in a timely, accessible manner and (2) sponsor events that bring the community together.

Working as a team and with the help of many local volunteers, we have developed two 1st Class vehicles for getting information out into the community – *The Emerald Hills Review* (which you are now enjoying) and the EHHA website, featuring a new discussion forum on Big Tent. Thanks to the special expertise and talents of our newsletter editor, Adriana Botto and our webmaster, Mike Sherman, these two communication venues just keep getting better and better.

As for events, this past September saw the success of the 2nd Annual Emerald Hills Community Picnic, featuring



food, fun, and a general all-around-good-time for everyone who attended and everyone who volunteered to help put it on.

Michael Mangini presenting raffle prize to Paula Brown from the 2nd Annual Emerald Hills Community Picnic. "It's fabulous! What a great prize," exclaimed Brown. And unnamed sources also report that the coat even fit!

As a result of these successful efforts, the EHHA treasury has

begun to rebound. Contributions sent in after an issue of *The Review* is mailed out, combined with revenue received from advertisements, has meant that *The Review* is both well received and on its way to becoming self-supporting. Income from picnic and raffle ticket sales helped to defray enough of the cost of that event to ensure that a 3rd Annual Emerald Hills Community Picnic will be held in 2010. In fact, it's already scheduled for the first Saturday after Labor Day at the Elks Club with a new sponsor, Tim Harrison from the Canyon Inn, who has signed up to help with the BBQ.

Two more community events are also scheduled for 2010. On March 23, 2010, the Annual EHHA Member Meeting will be held at the PCC and feature speakers from several agencies from San Mateo County plus the election of four EHHA board seats. Then, in late April, the EHHA will sponsor a *Meet the Candidates Night* at the PCC when area residents can come together to meet the three current candidates for San Mateo County Supervisor for District 3 – the District that represents

Emerald Hills and other unincorporated areas in the County – and hear their positions on local issues.

So it's getting better – all the time. In spite of the downturn in the economy, residents of Emerald Hills are coming out to meet each other at community events in ever-greater numbers, contributing to the support of local information sources like *The Review*, and supporting the local merchants and organizations that help us build community. And the word is getting out. As evidenced by the regular column by Marshall Wilson in *The Review*, county government is beginning to acknowledge that Emerald Hills residents are both interested in their community and engaged in local issues.

So please carefully consider running for one of the open seats on the EHHA Board this March by contacting one of the members of the Nominating Committee (Carl Touhey, Tim Farrar, or myself). By volunteering to help your community, you can help make sure that it keeps "getting better all the time!"



When Does the EHHA Board Meet?



The EHHA Board typically holds its monthly meetings on the second Wednesday of each month in the conference room (lower level) of the new Woodside Fire Station 19 at Jefferson Avenue and Wilmington Way. Meetings are open to the community, and we invite you to attend. The meeting schedule is available on our web site www.emeraldhills.org.

Builder and Neighbor Since 1959



It all started fifty years ago with a commitment to solid craftsmanship and a drive to perform the job better than anyone else.

So, if you are planning a new home, a simple or complex remodel, green building, a kitchen or a bath, Springs Construction is ready to help you expedite your building process. Whether you simply have an idea, or have plans ready for building, call us at (650) 298-9300. We are here to help.



WALTER M. SPRINGS
CONSTRUCTION

881 Hurlingame Ave. RWC 94063

www.springsconstruction.com

Lic # 232003

San Mateo County "News and Notes"

by Marshall Wilson,
Public Communications Manager

What's **NEW** with the **FLU**

The Flu: H1N1 (Swine) and Seasonal

San Mateo County's Health System provides updates about the flu and ways to help protect your family from contracting the flu at <http://www.smhealth.org/flu>.

The site offers answers to frequently asked questions, vaccine updates, guidance for specific groups and information for health care providers. If you have questions, call (650) 372-8572 Monday through Friday from 8 a.m. to 5 p.m. or call (650) 573-3927 for recorded information after-hours or on weekends.

Census 2010

Since 1790, the Census Bureau has counted every resident of the United States. Every 10 years, questionnaires are mailed to every household to count all who reside here, regardless of age, races, ethnicity or citizenship. It is critical that the County of San Mateo have an accurate count. Census numbers are used to determine Congressional representation and funding for important projects in our community.



IT'S IN OUR HANDS

In March of 2010, census forms will be delivered to every residence in the United States and Puerto Rico. When you receive yours, just answer the 10 short questions and then mail the form back in the postage-paid envelope provided.

For more information, please visit San Mateo County's census website: <http://www.co.sanmateo.ca.us/census> or contact the County's census coordinator, Margot Grant, at mgrant@co.sanmateo.ca.us or (650) 363-1947.

Winter Storm Watch

County residents in unincorporated areas may pick up sandbags free of charge at the Grant Corporation Yard, 752 Chestnut Street, Redwood City. Please call (650) 363-4103 for more details or visit <http://www.co.sanmateo.ca.us/publicworks>.



There is a limit of 15 bags; requests for additional bags will be considered on a case-by-case basis. When you are done with them, feel free to bring them back to the yard for disposal or simply empty the sand on your lawn and throw the bags away.

You can also find tips on preparing your home for winter storms and more resources at the Public Works Department Web site. You can also reach the Public Works emergency 24-hour hotline at (650) 363-4100 or, for non-emergencies, please call (650) 363-4103 Monday-through-Friday from 7 a.m. to 5 p.m.

Planning and Building

San Mateo County's Planning and Building Department has launched a new web site that provides easy, at-a-glance access to information such as plan and regulation updates, pending projects, and environmental impact reports. Visitors to the site can also check the status of permits and view aerial maps of the county. You can find the site at <http://www.co.sanmateo.ca.us/planning>.



Recycle Works



For help on reducing your waste at home, work or school and improving the environment (did you know you can easily recycle cooking oil?), contact the San Mateo County's RecycleWorks program. You can reach RecycleWorks at <http://www.recycleworks.org> or by calling (888) 442-2666.

In other "green" news, cities and counties in the Bay Area are part of a regional campaign to remind consumers to bring their own bags to the grocery store. For more information and tips on how to remember to bring your own bag to the store, visit <http://www.igotmybag.org>.

Getting Connected

Sign up for e-mail updates from San Mateo County departments by visiting the County's home page and clicking on "E-Subscribe" near the top of the page. The service is available day and night at <http://www.co.sanmateo.ca.us>.



You can also check out <http://smcnews.wordpress.com> for updates and information about San Mateo County's unincorporated neighborhoods.

Do You Have a Question about San Mateo County Government?

Please contact Deputy County Manager **Peggy Jensen** at pjensen@co.sanmateo.ca.us or (650) 363-4598 or Public Communications Manager **Marshall Wilson** at mwilson@co.sanmateo.ca.us or (650) 363-4153.



CANYON GAS & PROPANE

590 Canyon Rd
Emerald Hills, CA 94062

Mike Nazemian
(650) 369-2727

CanyonGas@yahoo.com

WINTER STORM PREPAREDNESS TIPS

The County of San Mateo Public Works Department and the Office of Emergency Services recommends the following:

Before the STORM

1. Keep insurance policies, document & other valuables in a safe-deposit box.
2. Consider flood insurance if you are in a high-risk flood area. If you live on a hillside, check if your insurance policy covers earth movement or mudslides.
3. Know safe routes from your home and office to high, safe ground.
4. Discuss emergency plans with your family.
5. Pre-arrange a contact person or volunteer to assist you later during a flood.
6. Post emergency numbers near the telephone.
7. Store the following supplies at work, home and in your car in handy locations:

- First aid kit and essential medicines
- Food (packages, dried, canned, and for special diets)
- Non-electric can opener
- Cash (ATMs may not be working)
- Portable radio, flashlights, extra batteries (stored in water tight plastic bag)
- Drinking water stored in closed, clean containers (allow one gallon per person per day for at least three days)

8. Keep sandbags, plywood, plastic sheeting, lumber, and other emergency building materials handy for waterproofing.
9. Keep your car fueled in the event filling stations are inoperable.
10. Help prevent storm drain blockages by keeping leaves and other debris out of streets, gutters, and catch basins.
11. Keep an old phone in your house that doesn't work on batteries, in case the power goes out and you are unable to charge your phones.

During the STORM

1. Tune to local radio or television stations for emergency information and instructions from local authorities. Use the radio tuned to KCBS 740 AM or KZSU 90.1 FM as your primary source of information or instruction.
2. Make sure your family and pets are safe.
3. Be ready to evacuate if directed by emergency personnel.
4. Share emergency information you receive with your neighbors.



5. Use the telephone ONLY for emergency needs, or to report dangerous conditions.
6. If flooding is likely, and time permits, move valuable household possessions from the floor.
7. If advised by local authorities to leave your home, move to a safe area before access is cut-off by floodwaters.
8. Do not try to enter areas blocked off by local authorities.
9. Do not try to drive across a flooded road—you could become stranded.
10. If your car stalls, abandon it IMMEDIATELY and seek higher ground.

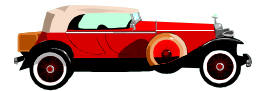
11. If water from a creek reaches level with your door, back your way out, and evacuate.

12. Web based weather information can be obtained by visiting the National Weather Service website at <http://www.wrh.noaa.gov/>.

After the STORM

1. Stay tuned to designated radio or television stations for information and instructions from local authorities.
2. Avoid disaster areas—your presence could hamper rescue and other emergency operations.
3. Use flashlights—NOT lanterns, matches or candles—to examine buildings; flammables may be present.
4. Avoid downed power lines and broken gas lines. Report them immediately. (See page 8 of this newsletter for emergency phone numbers "Resource List")
5. Do not handle live electrical equipment in wet areas. If electrical equipment or appliances have been in contact with water, have them checked before use.
6. DO NOT TURN GAS BACK ON YOURSELF. Call PG&E and then wait for a PG&E crew.
7. Do not use fresh foods or canned foods that have come in contact with floodwaters. (The water may be contaminated.)
8. Follow local instructions regarding the safety of drinking water. If in doubt, boil or purify water before drinking.

MAURICE TANIOS
Owner
A.S.E. Certified Technician



Canyon Auto Service
Complete Auto Repairs

10% Off oil change and lube with copy of this Ad
Offer Expires 12/31/2010

Phone: 650-364-5380
Fax: 650-364-5790

590 Canyon Rd
Redwood City, CA 94062



CANYON INN GROWS WITH THE COMMUNITY

In 1973, Tim Harrison invested \$1,950 for first and last month's rent on a boarded-up 7-11 store on the corner Canyon Road and Oak Knoll. He refurbished the building, installed wooden booths he built himself, strapped on a fry-cook apron, and opened the Canyon Inn restaurant—a road house featuring fresh-cooked hamburgers, fries, and a friendly neighborhood atmosphere. More than 36 years later, Harrison still opens the doors and oversees the operation of the Canyon Inn every day, but leaves the cooking of the now-expanded menu to his capable staff.

"You can still get great burgers and fries, but we also offer pizza, barbeque, salads, Mexican food, and we're changing it all the time. I'm even looking into getting a milkshake machine," said Harrison.

Over the years, the evolution of neighborhood restaurant has mirrored the evolution of the neighborhood it serves. "When I first opened, there was nothing but rolling hills between here and the Elks Club at the top of the hill. People used to tell me I was crazy for locating so far away from downtown Redwood City," Harrison remembered. "But look at it now. The area is full of families who bring their soccer teams and birthday parties here, and I feel like everyone who comes in is a friend or neighbor. It's a pleasure to come to work."

Harrison recalls the building boom that took place in the '80s and '90s after sewers were installed in the unincorporated area and marvels at the changes it made in his customer base. "I went from worrying about Hells Angels coming in on Friday nights, to worrying that I had enough booster chairs and baby seats," said Harrison. "And I couldn't be happier about the change, especially now that I have small children of my own."

As Harrison's customer base changed and grew, so did his menu. "The key to staying in business after all these years, in addition to perseverance, is changing with your trade area. If you don't evolve, you get left behind," said Harrison, who made the final payment on the Canyon Inn's 30-year mortgage in December 2009, commemorating the event with a small sign on the side of the restaurant that reads "Harrison Building."

Harrison, who lives close enough to his business to walk to work, believes the small town atmosphere in Redwood City and Emerald Hills is the best possible place to raise a family. "My 5-year old daughter, Alicia, goes to kindergarten at Clifford School, my 3-year old son, Timmy, attends preschool at St. Matthias, and they both got the best preparation for school at Patty Bury's Daycare up on Vista." (Continued on bottom of page 6)



Try our Hacksaw and Guacamole Burgers!

Celebrate with us!
It's our
36th Year!

Hamburgers voted best by
Sequoia High School Baseball Team!

◇ Full Menu - Hamburgers, Sandwiches, Salads, Soups, Daily Homemade Specials and much, much more!

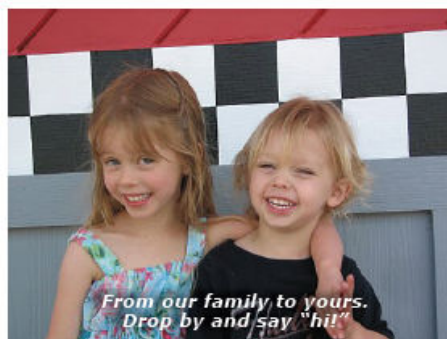
◇ Kids Menus ◇

◇ Name that Sandwich or Burger - Don't see what you want on our menu? Don't worry, you can ask at the counter and we will make it!

◇ WiFi available ◇

◇ Patio Area Available for Kids' Birthday Parties/Team Parties/Adult Special Events!

◇ Flat screen/HD, baseball package - we get any game!



10% Discount
with this ad

Pizza:
Choose your own toppings
or
make your own sandwich/hamburger.

Thursday Nite SPECIALS:
could be Prime Rib, but always something special. Call for details!

Sundays are special at Canyon Inn:
SPECIAL BREAKFAST BUFFET
9:00 A.M. 'til 1:00 P.M.
GIVE MOM and DAD A BREAK and
BRING THEM TO OUR HOME
ON THE HILL!



Emerald Lake Country Club By Alisa MacAvoy, Membership Staff

Did you know that Emerald Lake was incorporated September 17, 1920, as a not for profit athletic, recreational and social facility? On August 25, 1926, the Anglo-California Trust Company of San Francisco deeded the property to the Emerald Lake Country Club for the sum of \$10, with the following conditions: no building of any bar rooms, livery stables, undertaking establishments, or blacksmith shops.

The lake began as a watering hole for cattle and for the stagecoach horses that traveled between Pescadero and Redwood City in the late 19th century. The lake was later improved as a recreational facility for owners and renters of cabins in the area who came to escape the summer fog in San Francisco. The water that fills the lake comes from several seasonal creeks. The lake itself is about 1.75 acres. The county regularly tests the water and it is safe for swimming. We also have an assortment of fish and birds that inhabit the lake. We even have a pair of green herons and an albino catfish that make Emerald Lake their home!

Currently there are 50 owners that mostly live in Emerald Hills with a few living outside our paradise. We are almost exclusively volunteer run except for our paid lifeguards. By doing annual volunteer work hours, owners help maintain the health, safety and beauty of the lake for folks to enjoy.

Emerald Lake Country Club has many social events during the summer/fall season and neighbors are welcome to join in the festivities, even if you are not a member. You can check out the website starting in June for events and purchasing tickets.

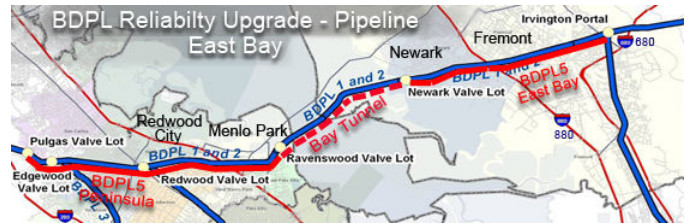
We sell summer memberships to interested parties starting February 1st each year for the summer season. Summer members pay dues, but are not required to volunteer work hours. They get to enjoy the cool water and sandy beach on those hot summer days! Last year, we sold out summer memberships in about one week! If you are interested in joining Emerald Lake Country Club as a summer member, download an application from our website <http://www.emeraldlakecountryclub.com/> and mail it in starting February 1st.



Project Update: Peninsula Bay Division Pipeline Construction to Begin Q1 2010 By Alison Kastama



The San Francisco Public Utilities Commission (SFPUC) announced the award of the construction contract for the 9-mile Peninsula portion of the Bay Division Pipeline (BDPL) Reliability Upgrade, or Bay Division Pipeline 5, to the lowest responsive bidder on December 8, 2009. This contract was valued between \$62-\$69 million dollars and the top three bids were below \$62 million.



Following contract award and receipt of a Notice to Proceed from the SFPUC, the contractor will have 30 days to present a draft construction schedule. The SFPUC anticipates this draft schedule will be available by February 2010. At that time, the project team will provide neighbors with a more precise schedule for work in your area.

The project team is currently working to prepare the pipeline alignment for construction. Some work is underway now along the SFPUC Right of Way to clear trees and shrubs that must be removed before the pipeline can be installed. All trees and shrubs to be removed have been marked and posted so residents and community members are alerted before any are removed.

We will continue to keep Emerald Hills neighbors informed as we receive detailed construction schedules. If you have any questions or would like additional information about the project, please contact the SFPUC at (800) 571-6610 or baydivision@sfwater.org.

CANYON INN (Continued from page 5)

But Tim Harrison is no stranger to community cheerleading. "In the late '70s and early '80s, before their first Super Bowl, not many people were cheering on the 49ers. So I went to their office on Nevada Street in Redwood City and told them that each time they won a game, everyone—players and staff—could eat free at my place the next week. I was doing it to rally some team spirit, and it started a 30-year relationship with the team that continues to this day, as you can see from the trophies and autographs on my restaurant walls. It also started my catering business, which is still going strong."

Continuing his record of community support, Harrison has volunteered to help sponsor the 3rd Annual Emerald Hills Community Picnic scheduled for September 2010. "I think it's great the way Emerald Hills is becoming a family-friendly area," said Harrison. "And you can count on me to help keep it going."



It Was a Very Good Year

A Message from EHHA Treasurer, Tim Farrar

I am pleased to report that in 2009 the Association revenues totaled \$10,039 and came from the following sources:

- \$5,305 in donations
- \$3,750 in newsletter advertising revenues
- \$944 in revenue from shirt sales, food and raffle tickets at the picnic

Expenses for the same period totaled \$8,050 and were primarily attributed to:

- \$5,100 for newsletter production
- \$2,600 for the Community picnic

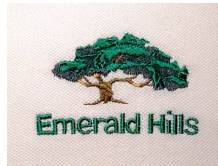
Thus, for 2009, the Association's financial position improved by nearly \$2,000 so that our bank account showed a December 2009 balance of \$5,254 compared to a December 2008 balance of \$3,230. This improved financial position was due to three things:

1. A decision by the Board to seek advertising revenues from local merchants to help defray the cost of newsletter production;
2. A decision by the Board to reduce expenses associated with the annual member meeting by changing the venue; and
3. Continued donation support from the community.

As this formula appears to be working to put the

Association back on a firm financial footing, I would like to thank everyone for the support they have shown thus far and urge you to reach out to friends, neighbors, and the merchants you do business with to keep it going.

Advertising in *The Review* is a very cost-effective way of reaching the community because we know from residents' feedback that it is widely read, retained, and not put immediately into the recycling bin like some other publications. And for supporters who donate \$100

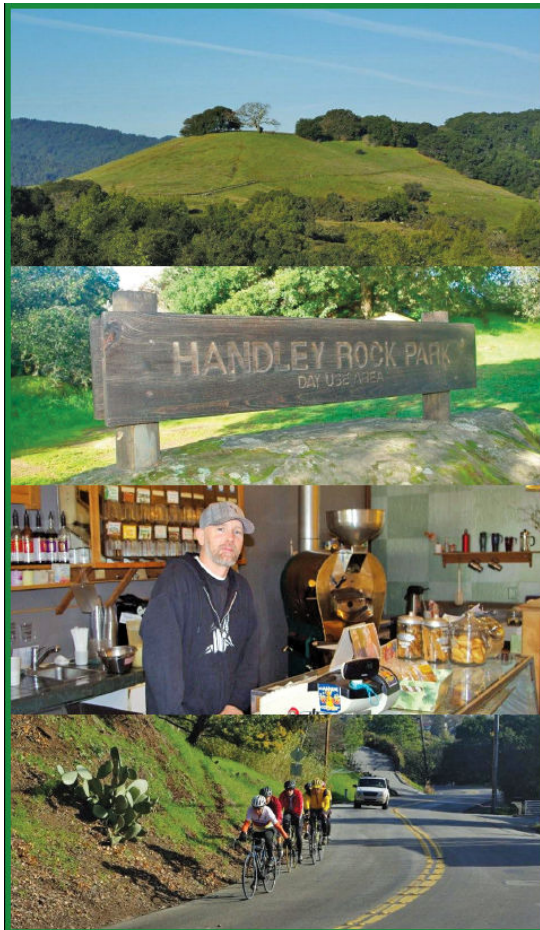


or more to the Association, the EHHA will give you a high-quality polo shirt or cap embroidered with the Emerald Hills logo. (If you would like a polo shirt or a cap, please include a note with your donation indicating your choice of thank-you gift and preferred shirt size, if applicable,

with each donation of \$100 or more.)

Enclosed with this newsletter you will find a donation envelope, which you may use to send contributions, with checks payable to the EHHA. If you receive the newsletter electronically, then you may send donations to us by mail at EHHA, Attn: Treasurer, PO Box 620449, Woodside, CA 94062, or you may donate via PayPal at <http://emeraldhills.synthasite.com/donate.php>.

Now that we have some momentum, let's keep it going to make sure that 2010 is also "a very good year" for the EHHA and community it serves. Thank you!

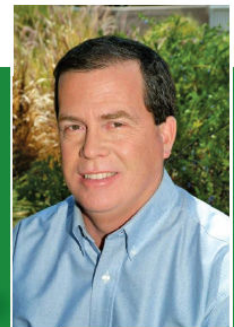


Perhaps my favorite image of the Emerald Hills is from times spent on back decks during winter rains. But, maybe it's a summertime swim at Lower Emerald Lake, a hike around Edgewood Park, or a Bleu Swiss Burger at the Canyon Inn. Whatever it is, it's these unique feelings that make the Emerald Hills a very special place to live.



While supplies last, receive our latest "Homesellers Handbook" absolutely free. Just email or call me with your mailing address and we'll mail this informative guide right away.

And remember, if you have friends, family or acquaintances thinking of buying or selling a home, I'm never too busy for any of your referrals.



John Sieling
Broker Associate
Phone: 650-610-6460
Cell: 650-465-6355
john@johnsieling.com
www.TheEmeraldHills.com
CA DRE #00898568

Yes! I want to contribute...

- I would like to contribute \$35.
- I can spare a bit more. Here is my donation for \$50.
- Here is my contribution for \$100.
I would like a cap *or* a polo shirt .
- My shirt size is Ladies' Men's
 SM MED L XL
- I am a resident of one of the most desirable neighborhoods on the Peninsula, and I want to keep it that way! Here is my contribution of \$_____.

- My check is enclosed.

If you would like to donate via credit card, please visit
<http://emeraldhills.synthasite.com/donate.php>
Your personal information is kept confidential.

Name

Street Address

Emerald Hills, CA 94062

City, State Zip

Phone # (optional)

E-mail Address (optional, but requested)

- Please send the email newsletter instead of print, to help preserve the environment *and* save the Association money.
- Please send me both the print and email newsletter.

You can make donations online at
<http://emeraldhills.synthasite.com/donate.php>
or you can mail your contributions to:

EHHA, PO Box 620449, Woodside, CA 94062

Please note that donations to the EHHA are not tax deductible.

Contact the Board of Directors

Tom Brouchoud ¹ (Vice President)	366-7890
Tim Farrar ² (Treasurer)	642-5195
Joe Foraker ¹	868-7495
Michael Mangini ² (President)	365-4449
John Raleigh ²	743-4111
Jay Roses ² (Corr. Secretary)	766-7425
Mike Sherman ¹ (Webmaster/Database Mgr.)	544-0896
Carl Touhey ² (Community Picnic)	368-2216
Marline Underwood ¹	224-1214

¹ Term expires at the 2010 Annual Meeting of Members
² Term expires at the 2011 Annual Meeting of Members

RESOURCE LIST



San Mateo County Department of Public Works

Emergency Line (24 hours)
(650) 363-4100
(Monday - Friday 7 am 5 pm)
(650) 363-4103

San Mateo County Office of Emergency Services

(OES) (650) 363-4790

California Office of Emergency Services

(916) 464-1013



For more information about winter storm preparedness, call the San Mateo County Office of Emergency Services at (650) 363-4790, visit the San Mateo County Sheriff's Office Website (and click on Citizen Preparedness) <http://www.co.sanmateo.ca.us>, or visit the FEMA website <http://www.fema.gov/hazards/winterstorms/>.

Red Cross Disaster Services

(650) 259-1750

To report downed wires or power lines, a power outage in your neighborhood, a gas leak

or other related emergency, call PG&E (800) 743-5000, OR call 911

USGS WaterWatch

Current water resources conditions

Map of real-time stream flow compared to historical stream flow for the day of the year

http://water.usgs.gov/cgi-bin/waterwatch?map_type=real&state=ca

Saving you energy and money & reducing the impact you have on the environment.



Roughly 80% of a home's natural gas use goes toward heating space and water. As much as half of the energy used in the home is wasted sending nearly four tons of green house gases into the air each month. Efficient heating and cooling is the solution.

Call us at (650) 366-3400 and mention that you are a member of the EHHA for a free heating or cooling system check.

Green Mechanical & HVAC, INC Lic #907402
(650) 366-3400 www.greenmechanical.net